

Texaa®

Specification and data sheets

Vibrasto 55

Acoustic cladding



Vibrasto 55	p. 3
Acoustic performance	p. 4
Specification	p. 5
Fitting methods	p. 6
Technical characteristics	p. 8

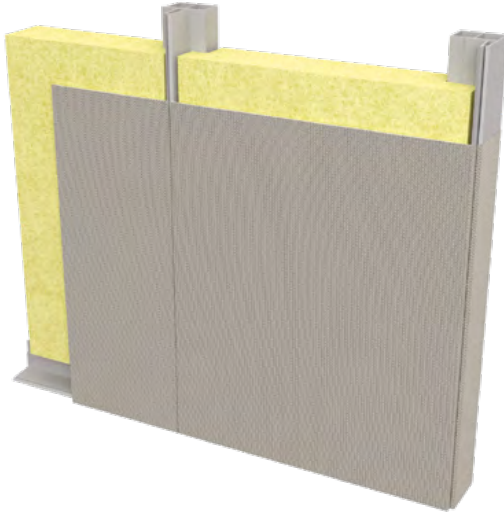
Production lead time

3 weeks

**Professionals to be
consulted for fitting**

Upholsterers and carpenters

Vibrasto 55



Vibrasto 55 is flexible acoustic cladding that can be stretch-fitted to walls, ceilings or furniture. It comprises a highly flame-resistant facing, made of sound-transparent Aeria* fabric, laminated onto wadding and stretch-fitted in front of a thick sound-absorbing material. Its exceptional performance corrects the acoustics of spaces with significant reverberation problems, while minimising the surface area that needs to be treated.

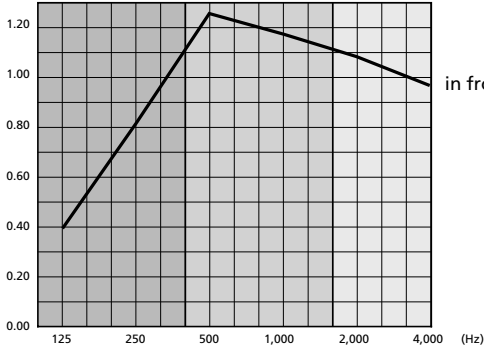
Width: 1,500 mm, thickness: 55 mm

* Aeria, sound-transparent fabric, exclusively patented by Texaa®

Acoustic performance

For Vibrasto stretched in front of plasterboard screwed onto a frame line with 40 mm mineral wall

α_{Sabine}

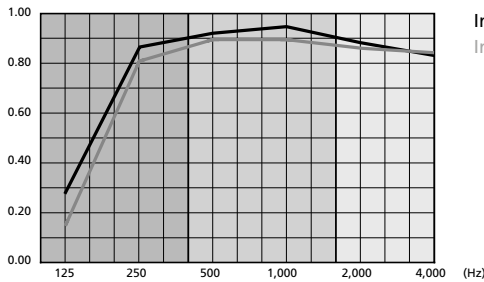


in front of two layers of 25-mm RI panels – **Vibrasto 55**

	α_w	Class	NRC	Frequencies (Hz)	125	250	500	1,000	2,000	4,000
Vibrasto + 2 25-mm RI panels	1	A	1	α_{Sabine}	0.40	0.81	1.24	1.17	1.08	0.97

For Vibrasto stretched and anchored against concrete

α_{Sabine}



In front of two layers of 25-mm RI panels – **Vibrasto 55**

In front of 1 layer of mineral wool, 45 mm thick – **Vibrasto 55**

	α_w	Class	NRC	Frequencies (Hz)	125	250	500	1,000	2,000	4,000
Vibrasto + 2 25-mm RI panels	0.95	A	0.90	α_{Sabine}	0.27	0.86	0.92	0.94	0.88	0.83
Vibrasto + 45-mm-thick mineral wool	0.90	A	0.90	α_{Sabine}	0.15	0.81	0.89	0.89	0.86	0.84

Test reports available on request – Standard NF EN 20354 / ISO 354.

Specification

Walls [and ceilings] can be treated with Texaa®'s highly flame-resistant Vibrasto 55 cladding. It is 1,500 mm wide and comprises an outer layer of sound-transparent Aeria fabric laminated onto wadding and stretch-fitted in front of RI panels. Its absorption coefficient α_w when fitted against concrete is 0.95 and 1 on plasterboard. The total thickness is then 55 mm.

European reaction to fire classification

- Facing: B-s1, d0
- RI panel: A2-s1, d0

Environmental characteristics

- Indoor air quality (ISO 16000):
 - Vibrasto A+, AgBB compliant, Indoor Air Comfort Gold
 - Panel RI: A+
- Contribution to environmental labels:
 - LEED: 9 to 16 points
 - BREEAM: 12.5 credits
 - DGNB: 32 to 36.4%
 - HQE: 7 targets
 - WELL: 14 credits
- Impact on climate change: 8.1 kg CO₂ eq /m² (EPD available on our website)
- 100% recycled wadding
- Tensioning battens made from fully recycled materials.
- Two 25-mm RI sound-absorbing panels made 80% from recycled material.
- Proportion of recycled components: ≥ 76%

Durability of the fabric cover

Performance of Aeria 330 g/m² run-resistant fabric

Protection against soiling

Antistatic properties 3.10⁷ Ω/m² (ASTM D257)

Cleaning

Vacuum cleaning, may be removed and refitted

Guarantee 10 years

Colours

Select from the 30 colours in the palette
Special colours available on request

Available options

Digital printing

Fitting methods

The cladding is installed by stretch-fitting the fabric between battens in front of two layers of 25-mm RI panels fastened to the support surface. The total thickness is then 55 mm.

Joins

The joins between adjacent lengths are produced as pencil-line joins.

The edges of the Vibrasto facing are inserted into U-section battens fitted in line with the join between two lengths. Join-to-join distance: 1,500 mm

Edging

The edges of the Vibrasto facing are inserted into L-shaped battens fitted around the edges of the covered surface (or around the surrounds of openings).

Covered edging (for visible edging) option

For a 55 mm-thick assembly, any L-shaped battens fitted along the visible edges can be delivered already covered with a matching fabric.

Outside corners

These corners are produced by stretching the facing over a corner batten provided by Texaa®.

Inside corners

These corners are produced as pencil line joins.

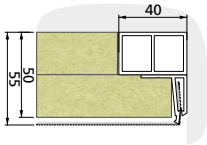
Electrical fittings

Plug sockets, switches etc. are mounted to protrude 50 mm from the surface.

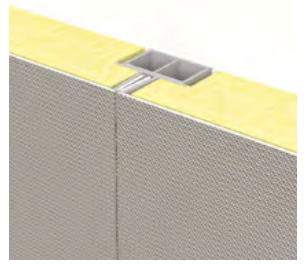
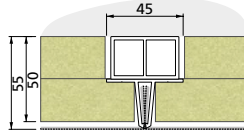
Layout plan

Different batches of fabric in the same colour may show very slight variations in shade; it is therefore imperative to respect the layout plan drawn up for each wall.

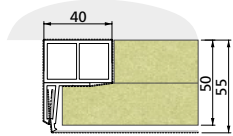
Uncovered batten when edge is not visible



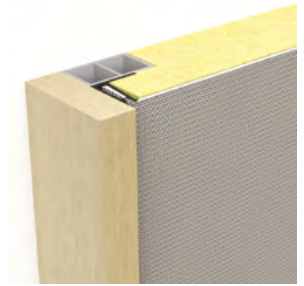
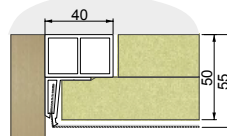
Join-to-join distance: 1,500 mm



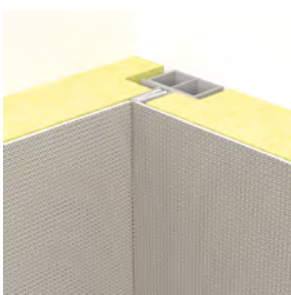
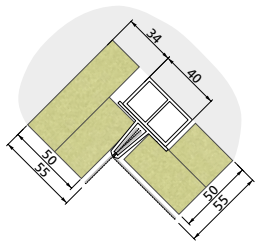
Covered batten when edge is visible



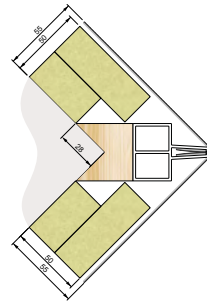
Wooden edge trim



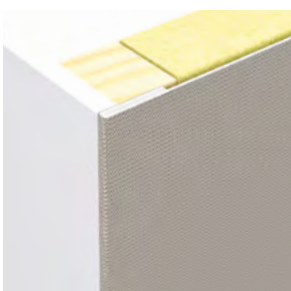
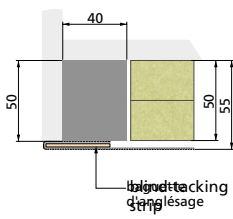
Inside corner



Outside corner over



Thin visible edge



Technical characteristics

Definition	Vibrasto 55
Fitting	Stretch
Absorbent material/thickness	Black or grey wadding / 3 mm / 100% recycled Two RI panel / 50 mm / 80% recycled
Surface / colours	Aeria [*] Maille Ronde / 30 colours
Physical properties	
– Weight	Facing: 0.46 kg / m ² 25-mm RI panel: 1 kg / m ²
– Total thickness	55 mm +0 / -1
– Width	1,520 +10 / -10
– Length	
– Formability (length or width)	+3 % – 0 %
– Light reflectance (colour Gris Nacré MR003)	81 %
Durability	
Mechanical properties	
– Abrasion resistance (EN 12947-2, number of rubs)	> 30,000
– Fraying	None
– Variations in dimensions (under normal conditions of temperature and relative humidity)	< 0.1 %
– Colour fastness ISO 105-B02 (scale from 1 to 8)	≥ 5
– Antistatic properties (ASTM D257)	3.10 ⁷ Ω/m ²
– Conditions of normal exposure	Relative humidity between 30% and 75% and temperature between 10°C and 30°C
– Conditions of exceptional exposure	Relative humidity between 20% and 90% and temperature between 10°C and 30°C
Health and safety	
Reaction to fire classification	
–Europe NF EN 13501-1	Facing: B-s1,d0 25-mm RI panel: A2-s1, d0
Development of micro-organisms	The materials used reduce the proliferation of house dust mites and micro-organisms
Environmental characteristics	
VOC and formaldehyde emissions (ISO 16000) French health labelling & in accordance with German protocol AgBB / Indoor Air Comfort label	A+ / Conforme / Gold
Contribution to environmental labels	LEED: 9 to 16 points BREEAM: 12.5 credits DGNB: 32 to 36.4% HQE: 7 targets WELL: 14 credits
Impact on climate change (EN 15804) Product Declarations (EPD) on texaa.com	8.1 kg CO ₂ eq / m ²
Proportion of recycled components	≥ 76%
Cleaning	
Method	Vacuum clean every one to five years, depending on conditions of use** Removable

* Texaa[®]'s internationally patented **Aeria** sound-transparent fabric / ** refer to the cleaning and maintenance sheets

Texaa® is a privately-owned company with 50 employees. Informed by continuous contact with architects and professionals in the building industry, we design, manufacture and distribute solutions to enhance the acoustic comfort of the spaces in which people live and work. **Texaa®** products are technically sophisticated, sensitive and hard-wearing. Their hallmark is the textile in which they are clad: **Aeria*** is knitted in our workshop near Bordeaux in a palette of 30 colours. Since 1978, it has been our pride and delight to play our part in developing quality architecture in France, Europe, USA and beyond.

*our sound-transparent textile with an exclusive **Texaa®** patent

**Updates at
www.texaa.com**

Texaa®
textile, acoustics, architecture

United Kingdom
Becket House
1 Lambeth Palace Road
London SE1 7EU
+44 (0) 20 7092 3435
contact@texaa.co.uk
www.texaa.com